

ORIGINS

Elevate pH 600+ • Reverse Osmosis



Includes dedicated 3.2 gallon tank and all hardware. Faucet sold separately.



Elevate Your Drinking Water

Superior filtration and design puts clear, fresh, great tasting water right at your fingertips. No more guessing what's in your water. Reverse Osmosis works to remove dissolved substances from your water. RO is capable of rejecting: salts, sugars, proteins, dyes, particles, heavy metals, dissolved organics, and disinfectant byproducts. The water is then enhanced by our pH our "Elevate pH filter" leaving your water perfectly balanced for enhanced hydration.

6-Stages of Filtration with Elevated Enhanced pH:

With 6 total treatment stages and 4 stages of advanced filtration, the Aerus Elevate pH 600+ elevates the world of Reverse Osmosis by reintroducing minerals to the water enhancing the overall functionality by increasing the pH. The water first enters a Sediment Filter, then through a (2) Activated Carbon Filter before entering a (3) coconut granulated carbon filter. This enhanced carbon treatment protects a 250 gallon per day NSF approved Reverse Osmosis (RO) Membrane which removes virtually all impurities from the water. The final 2 stages of elevated enhancement introduce our Proprietary pH-enhancing Filter Technology, which is then refined one last time by our Polishing Filter. The result is water that is perfectly balanced and mineralized for enhanced hydration.

* Results and effectiveness for all stages of filtration will vary depending upon source water and other factors.



STAGE 1

Sediment Filter

Polypropylene filter for removal of sand, silt, dirt and rust particles.

STAGE 2

Block Carbon Filter

Removes chlorine, odors, suspended particles, sand, salt, dirt, rust particles, etc from drinking water.

STAGE 3

Polishing Filter

Post coconut carbon has good filtration performance in removing residual chlorine and odor, improving the taste if drinking water.

STAGE 4

Reverse Osmosis Membrane

Removes up to 99% of total dissolved Solids (TDS) and many other chemicals and contaminants.

STAGE 5

Alkaline Inducing Filter

Ceramic alkaline balls increase the pH value and improve the taste of drinking water.

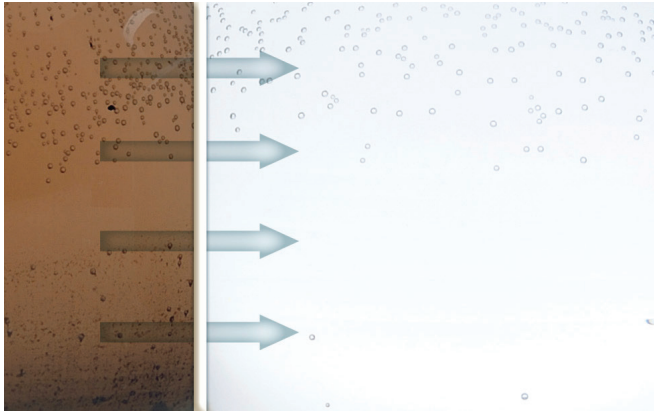
STAGE 6

Polishing Filter

Post coconut carbon has good filtration performance in removing residual chlorine and odor, improving the taste if drinking water.

ORIGINS

Elevate pH 600+ • Reverse Osmosis



Reverse osmosis forces water through a special membrane to remove contaminants

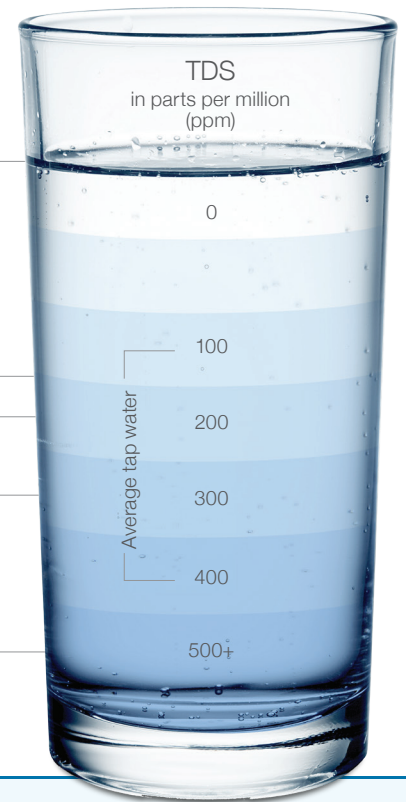
*Ideal drinking water from reverse osmosis, deionization, micro-filtration, distillation, etc.

Acceptable water from carbon filtration, mountain springs or aquifers

Marginally acceptable

Unpleasant water from the tap or mineral springs

The EPA's maximum level



WATER TREATMENT METHOD COMPARISON	Asbestos	Barium	Calcium	Chlorine	Copper	Giardia Cysts	Herbicide	Iron	Lead	Magnesium	Mercury	Nitrate	Pesticides	PCBs	Sulfate	Taste & Odor	THMs	Turbidity	VOCs	Zinc
Activated Carbon				✓			✓	✓					✓	✓		✓		✓	✓	
Water Softeners		✓	✓		✓			✓		✓										
Faucet Filters*	✓			✓		✓		✓								✓				
Pitcher*			✓	✓	✓		✓	✓		✓	✓					✓				
Reverse Osmosis	✓	✓	✓	✓	✓	✓	✓	✓	✓	✓	✓	✓	✓	✓	✓	✓	✓	✓	✓	✓

Results and effectiveness of all stages of filtration will vary depending upon source water and other factors

*The faucet filters and pitcher may remove more than what is shown above.



The First Name in Healthy Homes®

From 1924 through the turn of the century, we were Electrolux, the clear leader in home cleaning throughout North America. Now, we're Aerus, a new name for a new generation of products and services designed to help make your home a Healthy Home. All backed by performance so legendary, over 99.8% of our customers recommend Aerus to their friends and family.



Honored by the Smithsonian
Trusted by Millions of Homes

We Offer Lifetime In-Home Service



Aerus. Your Original Manufacturer & Authorized Provider of Parts & Services for all 1924-2003 Electrolux Vacuums.

Name _____

Phone Number _____

800.243.9078 (US) | 800.668.0763 (CANADA)

www.aerushome.com

